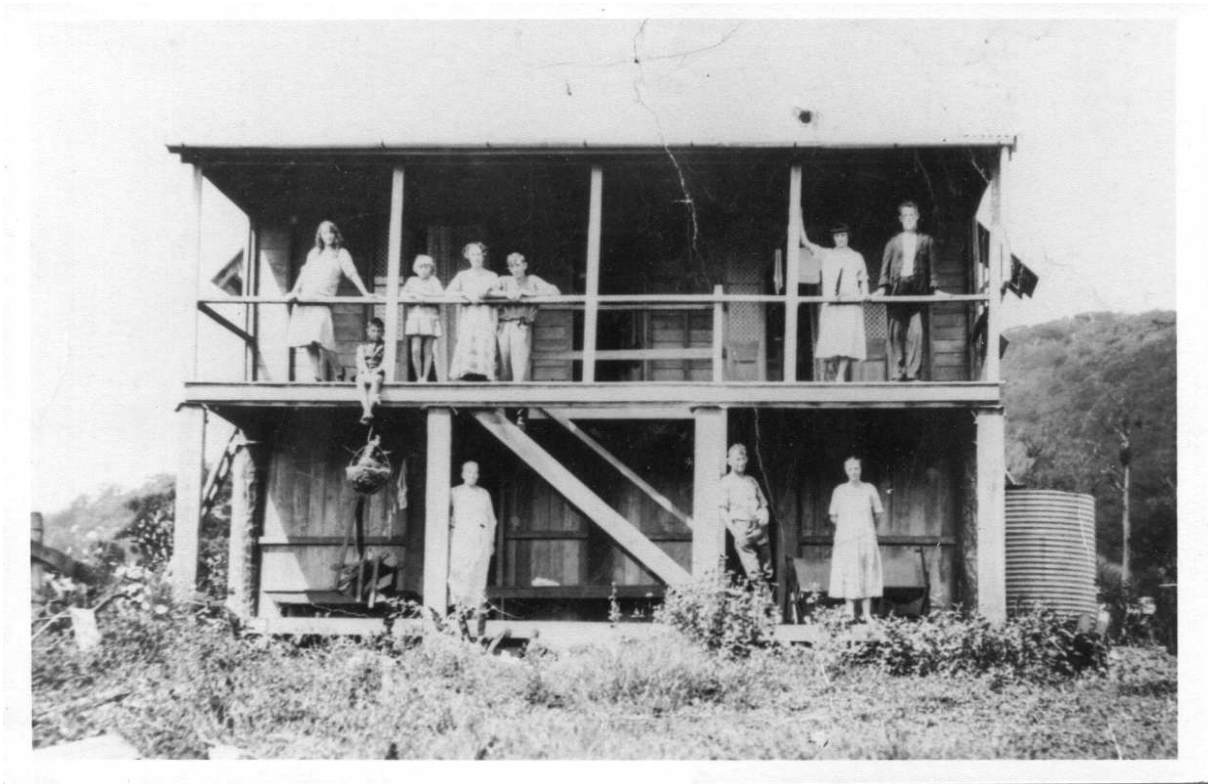


Linga Longa Guest House



This Guest House 'Linga Longa', owned by John & Ivy Leticia Cunningham
(Neil Cunningham's grandparents),
was built in 1919/20

It stood on top of the hill where the Cabins above The Chalet now stand,
facing 'the flat' where the oval now is.

Later on it was pulled down, then WB Swayne (who built The Eungella General Store)
built his house 'Home View' there.

Photo from: Flora Cunningham